

### All the Way to Galway [1]

Musical notation for 'All the Way to Galway [1]'. It consists of three staves of music in treble clef, key of D major (one sharp), and common time (C). The first staff begins with a quarter rest followed by a series of eighth and sixteenth notes. The second and third staves continue the melody with similar rhythmic patterns, ending with a double bar line and repeat dots.

*O'Neill – Dance Music of Ireland: 1001 Gems (1907), No. 999*

Rhythm: March or Air

Transcription: AK/Fiddler's Companion

### All the Way to Galway [3]

Musical notation for 'All the Way to Galway [3]'. It consists of two staves of music in treble clef, key of D major (one sharp), and common time (C). The first staff starts with a repeat sign, followed by eighth and sixteenth notes, including a triplet of eighth notes marked with a '3'. The second staff continues the melody with similar rhythmic patterns, ending with a double bar line and repeat dots.

# All The Way To Galway

Musical score for "All The Way To Galway" in 2/4 time, D major. The score consists of four staves of music. The first staff begins with a treble clef, a key signature of two sharps (F# and C#), and a 2/4 time signature. The melody is written on a single staff with a treble clef. The second staff continues the melody. The third and fourth staves show the melody with a repeat sign at the beginning of the third staff. Chord symbols are placed above the notes: D, D, Em, A7, D, A7, D, A, G, D, A7, D.

# All The Way To Galway

Musical score for "All The Way To Galway" in 4/4 time, D major. The score consists of four staves of music. The first staff begins with a treble clef, a key signature of two sharps (F# and C#), and a 4/4 time signature. The melody is written on a single staff with a treble clef. The second staff continues the melody. The third and fourth staves show the melody with a repeat sign at the beginning of the third staff. Chord symbols are placed above the notes: D, D, Em, A7, D, A7, D, A, G, D, A7, D.

## All the Way to Galway [1]

Three staves of musical notation for the piece 'All the Way to Galway [1]'. The first staff is the melody in treble clef, G major, common time. The second and third staves are accompaniment in treble clef, G major, common time. The piece consists of 16 measures and ends with a double bar line and repeat dots.

*OâNeill â Dance Music of Ireland: 1001 Gems (1907), No. 999*

Rhythm: March or Air

Transcription: AK/Fiddlerâs Companion

## Road to Lisdoonvarna, The [2]

All the Ways to Galway [1]

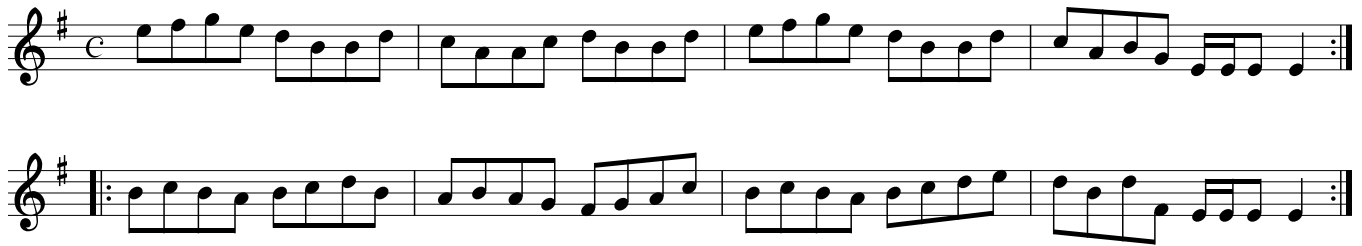
Three staves of musical notation for the piece 'Road to Lisdoonvarna, The [2]'. The first staff is the melody in treble clef, D major, 2/4 time. The second and third staves are accompaniment in treble clef, D major, 2/4 time. The piece consists of 16 measures and ends with a double bar line and repeat dots.

Rhythm: reel

Transcription: id:hn-reel-195

transcribed by henrik.norbeck@mailbox.swipnet.se

## Aâ the Way to Galloway



*Kerr â ^ Merry Melodies, vol. 3, No. 74 (c. 1880â s)*

Rhythm: Reel

Transcription: AK/Fiddlerâ s Companion

## All the Way to Galway [3]



## All the Way to Galway [3]



*Jerry Oâ Brienâ s Accordion Instructor (1949)*

Transcription: AK/Fiddlerâ s Companion